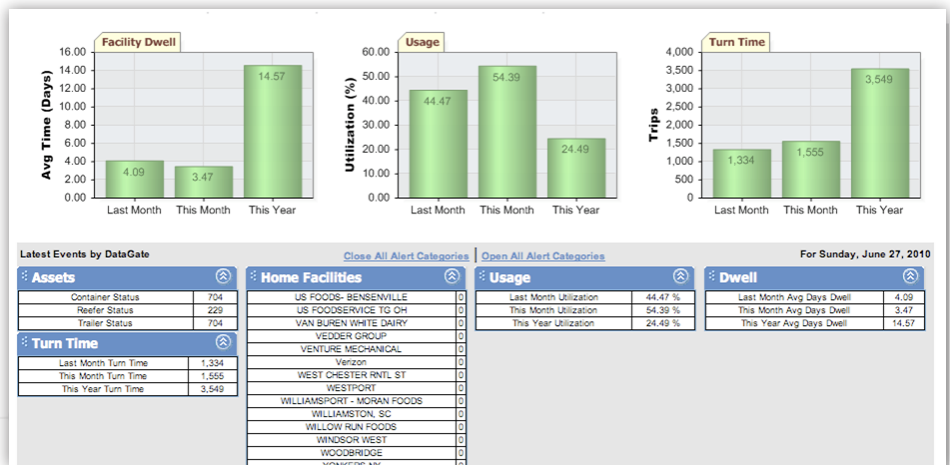


CargoWatch®

Smart fleet management—track, monitor, and control all trailer asset types

Improve fleet efficiency and asset utilization, ensure temperature compliance and enhance security.



CargoWatch enables transportation companies to have real-time visibility and control of their dry and refrigerated assets delivering improved operational efficiency, enhanced temperature management and compliance, and increased security.

The powerful cloud application integrates with robust ORBCOMM devices and sensors, cellular and/or satellite connectivity, and end to end customer care. It can operate as a standalone solution, integrate into leading transportation management systems (TMS), or be integrated by API into leading ERP or other software applications to meet any customer requirement.

Operational Visibility

CargoWatch delivers visibility of trailer status, location, history, arrival/departure and load status, helping significantly improve operational efficiency, fuel and maintenance costs as well as cargo security. With enhanced visibility, transportation companies can provide just-in-time delivery services and accurate ETAs for improved customer service and satisfaction.

Reefer Management and Control

With reliable monitoring and two-way control for every type of reefer unit, CargoWatch delivers one of the most effective refrigeration management tools available in the industry. Remotely initiate pre-cool sequences, monitor and adjust temperatures, monitor modes of operation, fuel consumption, engine hours and battery status ensuring compliance, minimizing risk, and enhancing efficiency.

Real Time Alerts

Receive real-time alerts when issues occur - a reefer's temperature is outside the normal range, a unit is turned off, low battery levels are detected, when a trailer enters or leaves a geofence, is loaded or unloaded, and more.

Advanced Reporting and Analytics

Improve operational efficiency with advanced reports to track engine health and hours of operation, fuel usage, geofences, inventory management and more. Leverage historical sensor data and run interactive graphs for one of more parameters for advanced data analysis and more efficient business planning.

Customizable and easy to use

Seamless integration with enterprise and dispatch systems

Designed for all asset types

Advanced reporting and analytic capabilities

Trailer lockdown

Two-way temperature monitoring and control



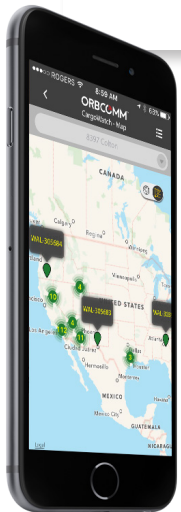
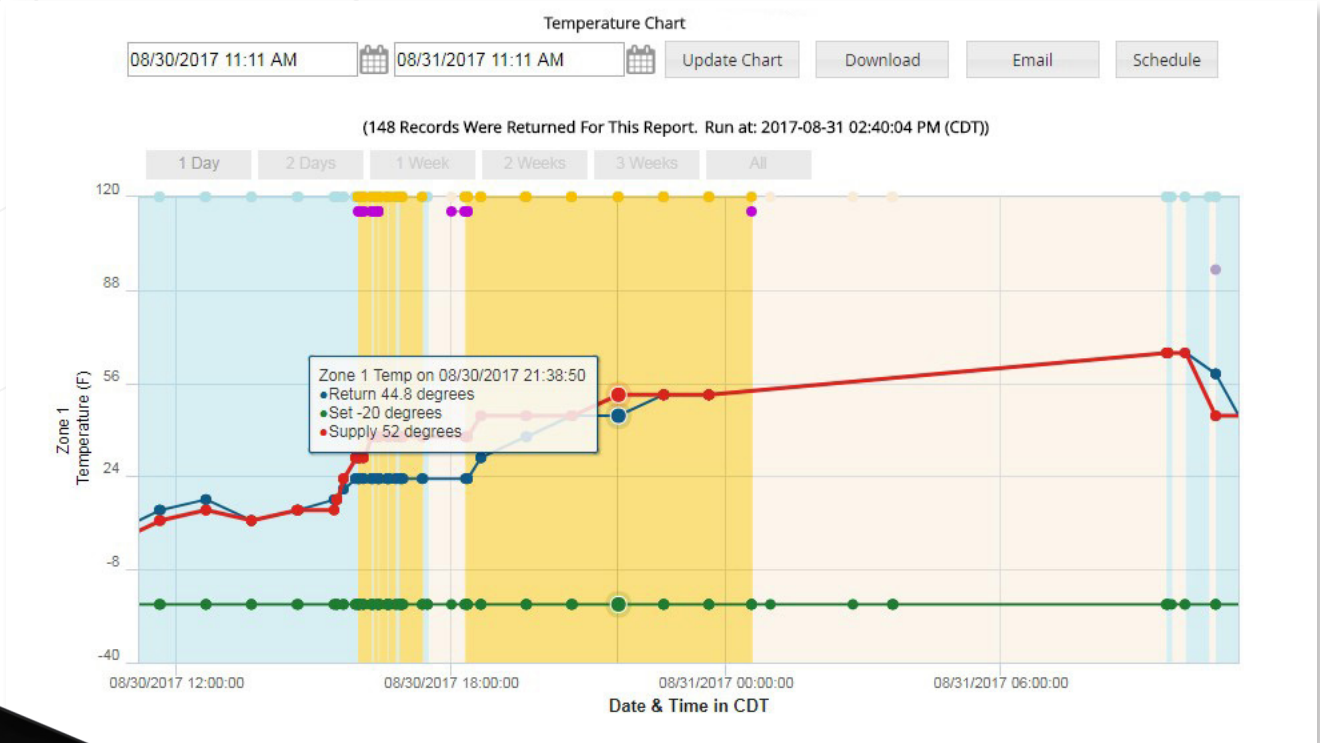
Geofences

Configure geofences so customers receive notifications when trailers enter or exit a location or when dwell times at a location are exceeded.

XT4760, and select third party devices. Most devices are available in multiple configurations including cellular and satellite connectivity. Installation and customer support are available.

Integration

CargoWatch is integrated with multiple ORBCOMM and third-party devices including the GT1100, PT6000, GT2300,



Mobile Application

The ORBCOMM mobile app makes it possible to manage dry, reefer, and mixed fleets on the go. Track the location of assets in real-time, automate yard checks, view reefer alarms and maintenance reports, monitor and control asset temperature and more, all from the palm of your hand.

CALL: 82.2.3444.7311 EMAIL: SALES@ORBCOMM.CO.KR VISIT: WWW.ORBCOMM.CO.KR

ORBCOMM (Nasdaq: ORBC) is a global leader and innovator in the industrial Internet of Things, providing solutions that connect businesses to their assets to deliver increased visibility and operational efficiency. The company offers a broad set of asset monitoring and control solutions, including seamless satellite and cellular connectivity, unique hardware and powerful applications, all backed by end-to-end customer support, from installation to deployment to customer care. ORBCOMM has a diverse customer base including premier OEMs, solutions customers and channel partners spanning transportation, supply chain, warehousing and inventory, heavy equipment, maritime, natural resources, and government. For more information, visit www.orbcomm.com.