

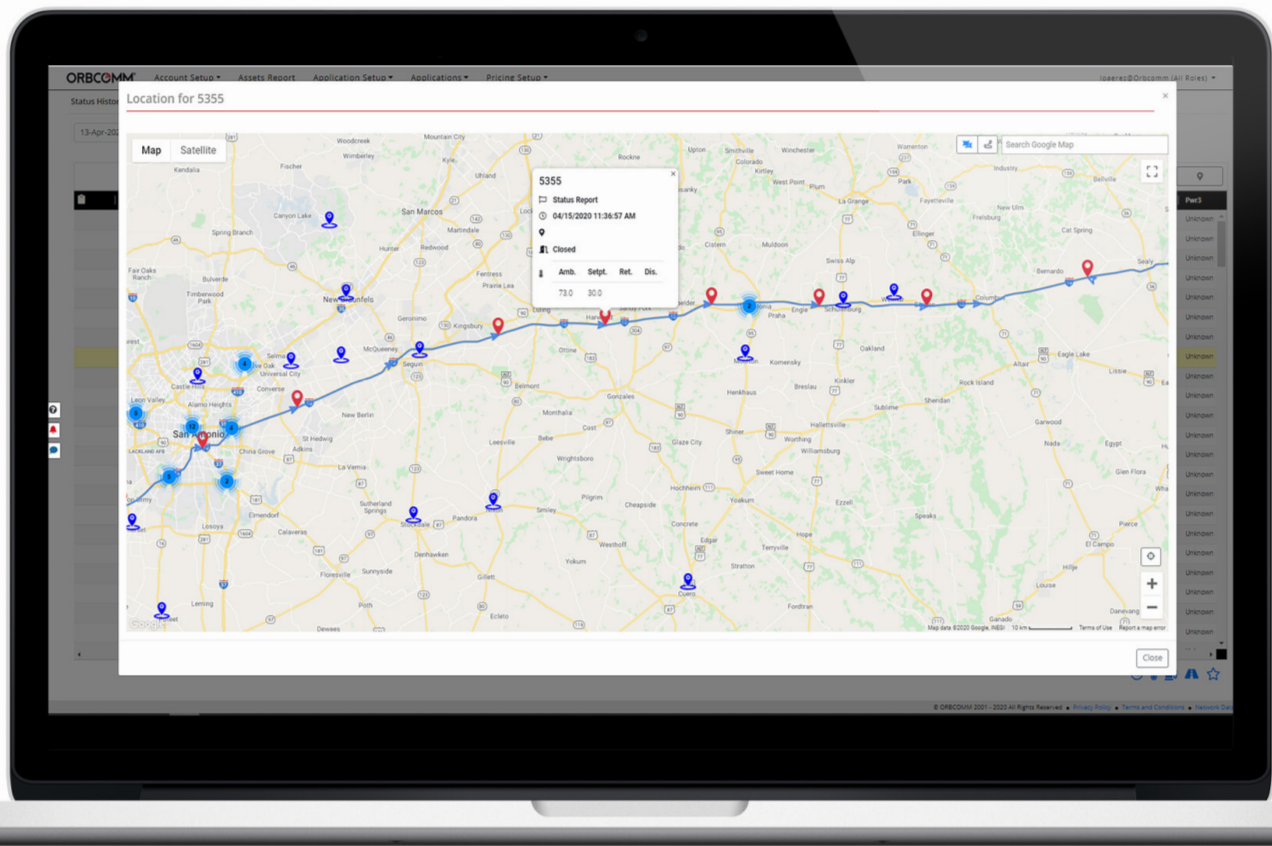
THE ORBCOMM PLATFORM

It all comes together here



Multiple assets shouldn't mean multiple screens or applications to monitor and analyze your operation. While telematics solutions can help with visibility, running different systems from different providers is frustrating and inefficient.

The ORBCOMM platform is a single, unified, next-generation analytics and reporting platform that unlocks data-rich insights from your assets so that you can make faster, more accurate, better informed decisions. The all-new, cloud-based platform puts everything in one place with intuitive icons to distinguish asset types, reports by asset type and customizable workspaces and access control so that each user gets the data they need quickly and easily.



Your data, your way, anywhere you want it

Manage multiple assets through one seamless application from the office, at home, on the road or anywhere else; get informed quicker through tighter reporting intervals and uncover deeper insights about your business through advanced analytics. With ORBCOMM, you get one provider with one user-friendly platform, so you can efficiently optimize asset usage, easily comply with regulations, protect your cargo and improve safety, performance and productivity.

Key features

Any asset, anywhere

Our end-to-end telematics solutions enable comprehensive visibility and management so you can track, monitor, control and manage your assets in one place. Not just reefers, dry trailers and trucks, but chassis and dry and refrigerated shipping containers on road, rail and sea, along with integration with sensors for fuel, doors, cargo, temperature and more. Get the big picture through one source of information, with a single view of all assets and a single sign-on.

Advanced analytics

Collecting data on your assets is only useful if you can turn it into actionable information. The ORBCOMM platform delivers a wealth of information that can transform the way you do business by digging deeper into data to reveal hidden opportunities.

Self-service configurability

Take control with enhanced user, roles and permissioning for users, admins, groups and even customers. You decide which organizations, features, assets, devices, geofence, menus and data elements that users and groups see and



Get the big picture
*through one source of information,
with a single view of all assets
and a single sign-on*

control, with functionality to suit beginner, advanced and power users.

Personalized usability

With a modern, easy-to-use, intuitive interface, users find the platform quick to learn and flexible enough to accommodate basic, advanced or power users. Users can customize the data they need to see – with preferences, saved searches, scheduled reports, workspaces, widgets and data filters.

New reports

Bring new insights to the surface with dashboards and additional new reports to serve up critical information—

Key benefits

Visibility

Monitor multiple asset types via one seamless application, enabling you to make critical decisions based on accurate information.

Accelerated insight

Uncover deep insights about your business through advanced analytics and faster data access.

Future proof

Built for the future, the platform will support the evolving need for increased data and more sophisticated solutions in a 5G IoT ecosystem.

Flexibility

Personalized user experience unlocks relevant data faster for every user in the organization.

and drill down quickly to find the information you are looking for. Schedule reports, use alerts and review exception workspaces to focus on what really matters.

Open and scalable

Enrich your organization’s TMS, ERP or third-party systems through flexible APIs and comprehensive integrations, giving you the opportunity to export telematics data from the ORBCOMM platform to internal or external dispatch and proprietary enterprise systems.

Scalability

The platform is scalable to suit any size of operation, whether you have 10 or 10,000 assets.

Configurability

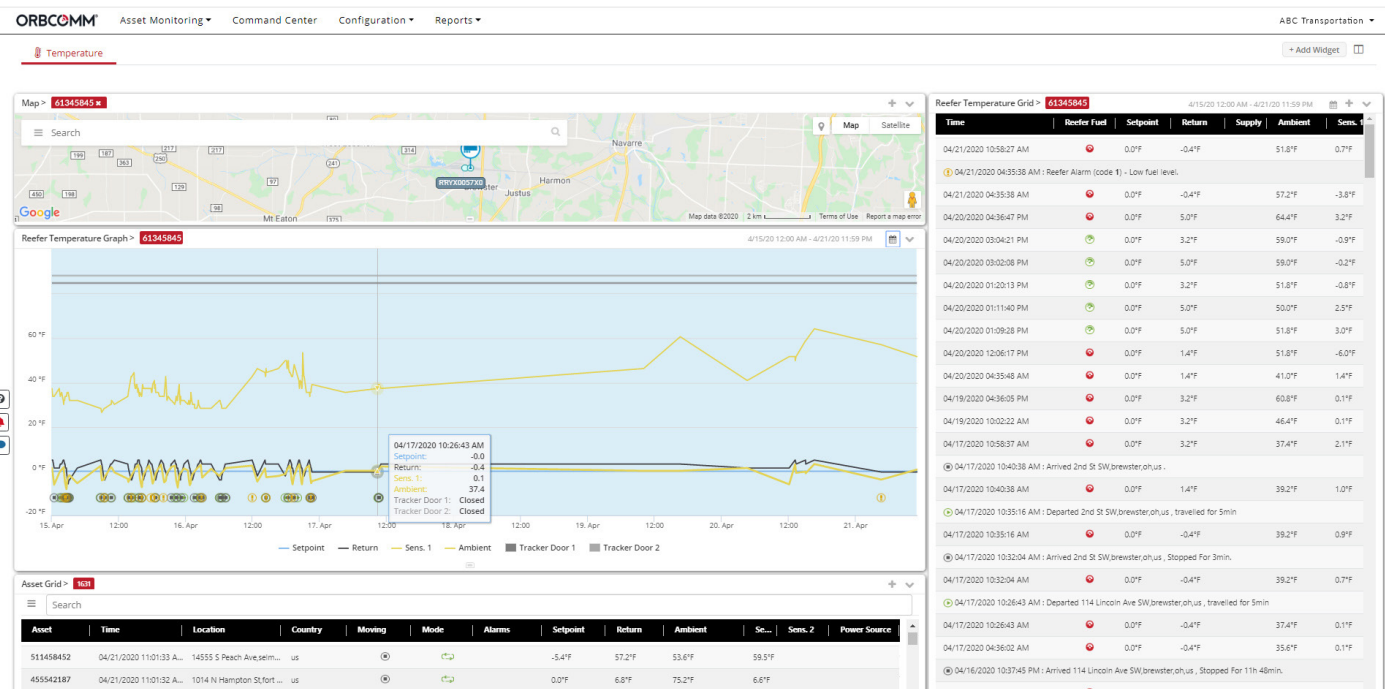
Advanced permissioning, role allocation and authority levels improves data security, reduces business risk and has the potential to extend data access to customers.

Control

Make better financial decisions by maximizing asset utilisation with all your data in one place.

Improved ROI

Increased usability and utility will maximize the return on your technology investment.



Dynamic temperature charts for specific dates make it easy to analyze performance.

Five reasons to choose the ORBCOMM platform

1 25 years' experience
Choose a company that's proven itself through 25 years of operation and 500,000 assets in the field and whose solutions have been widely deployed by some of the biggest names in the industry.

2 Seamless integration
Already using other critical enterprise applications like a transport management system? Our flexible APIs and comprehensive integrations seamlessly deliver rich asset data to your existing third-party or proprietary enterprise systems.

3 End-to-end
Our solutions feature proprietary, best-in-class technology and include intelligent IoT telematics devices, seamless satellite and cellular connectivity and

the powerful ORBCOMM platform, all backed by end-to-end customer support through all aspects of deployment and beyond.

4 Single-source solution
Eliminate the risk and complexity of sourcing multiple providers for different assets. Unlike competitors, we provide integrated, proprietary end-to-end solutions for nearly every asset class. The devices, the connectivity and the ORBCOMM platform are all designed to work together, and there's only one number to call if an issue arises.

5 Complete support
With global best-in-class multilingual sales, service and 24/7/365 technical support teams, we support customers from requirements assessment to installation to ongoing free customer care.

Fleets trying to cohesively manage multiple asset types understand the complexity this adds to their operations. As global leaders in industrial transportation IoT, **ORBCOMM has the solutions, experience and expertise** to optimize asset usage, comply with regulations, protect your cargo and improve fleet safety, performance and productivity.

Contact us today at sales@orbcomm.com to see how our comprehensive platform can optimize the way you do business, or visit us at www.orbcomm.com

Learn more about our transportation solutions

Mixed Fleet Solution

Easily manage multiple assets with one simple telematics solution.

The Smart Trailer

Complete visibility and efficiency for dry van fleets.

The Smart Cold Chain

Real-time connectivity and traceability for refrigerated transportation.

The Smart Truck

Fleet management solutions for drivers, back offices and fleet managers.

Ask your rep or see all of our solution sheets at www.orbcomm.com



ORBCOMM®

ORBCOMM (Nasdaq: ORBC) is a global leader and innovator in the industrial Internet of Things, providing solutions that connect businesses to their assets to deliver increased visibility and operational efficiency. The company offers a broad set of asset monitoring and control solutions, including seamless satellite and cellular connectivity, unique hardware and powerful applications, all backed by end-to-end customer support, from installation to deployment to customer care. ORBCOMM has a diverse customer base including premier OEMs, solutions customers and channel partners spanning transportation, supply chain, warehousing and inventory, heavy equipment, maritime, natural resources, and government. For more information, visit www.ORBCOMM.com.

© ORBCOMM 2020. All rights reserved.

052220B

